



WOODLANDS OLD LANE

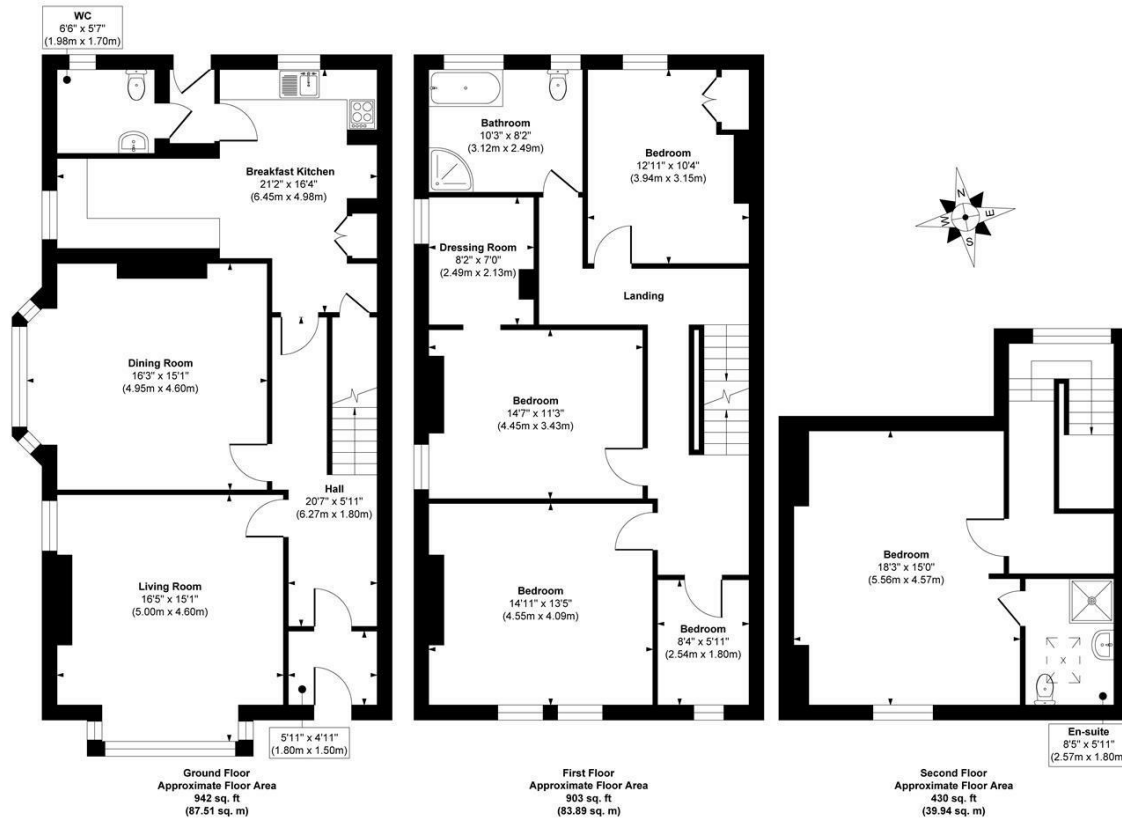
LEEDS, LS11 8DZ

£275,000
FREEHOLD

A substantial 5 bedroom semi-detached property in a popular Beeston location, offering excellent potential for refurbishment and development. Requiring full modernisation, the property sits on a generous plot with a large rear garden, providing scope to extend or build (subject to planning). Previously used as an HMO, it presents a fantastic opportunity for developers, landlords, and builders alike. Ideally located close to local amenities and transport links, the property will be sold with vacant possession.

MONROE

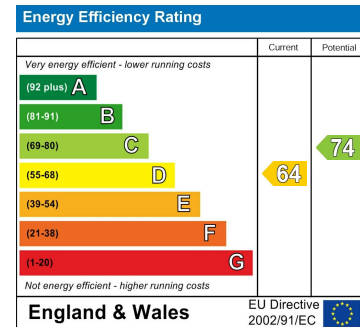
SELLERS OF THE FINEST HOMES



Approx. Gross Internal Floor Area 2275 sq. ft / 211.34 sq. m

Illustration for identification purposes only, measurements are approximate, not to scale.

Copyright © Show Home.



Agents Note: Whilst every care has been taken to prepare these particulars, they are for guidance purposes only. All measurements are approximate and are for general guidance purposes only and whilst every care has been taken to ensure their accuracy, they should not be relied upon and potential buyers/tenants are advised to recheck the measurements

Leeds City Centre
Leeds City Centre
Whitehall Road Leeds
LS12 1FJ

0113 350 0866
citycentre@monroeestateagents.com

MONROE

SELLERS OF THE FINEST HOMES